

# Your local property experts

PhilipAlexander is your local independent estate agent. Every year, hundreds of people entrust us to help them buy, sell, let or manage a property.

Our local knowledge, competitive rates and honest attitude are the reasons so many people choose us over a corporate chain. But don't take our word for it, read what they have to say at [philipalexander.net/reviews](http://philipalexander.net/reviews)

You'll find us on Hornsey High Street. Pop in for a chat or call us today.

Call **020 8342 9444** to speak to one of our friendly team.

*trustworthy*  
*faultless service*  
*straightforward*  
**honest** *a breath of*  
*professional* *fresh air*  
**accessible**  
*friendly* *dependable*  
*responsive*  
*transparent*

Quotes taken from independent Google reviews 2006 to 2016



PhilipAlexander Estate Agents  
52 High Street, Hornsey  
London N8 7NX

**philipalexander**  
Thinking local

020 8342 9444  
[www.philipalexander.net](http://www.philipalexander.net)

**philipalexander**  
Thinking local



**130 - 132 Tottenham Lane, London N8**

**£475,000** FOR SALE

*Apartment - Purpose Built*

🛏️ 2 🛋️ 1 🚿 2



# 130 - 132 Tottenham Lane, London £475,000

## Description

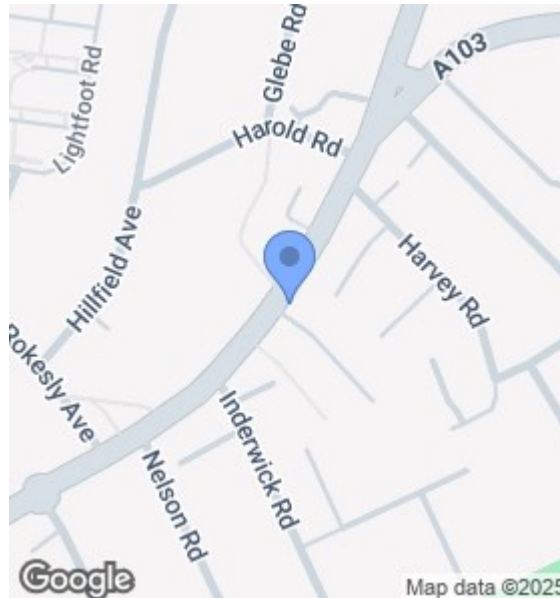
CHAIN FREE – Spacious & Stylish 2-Bedroom Ground Floor Apartment with Private Parking, Concierge, and Gym Access

An immaculately presented two-bedroom ground floor apartment set within the popular North Point development on Tottenham Lane, right in the heart of vibrant Crouch End. Offered chain free, this modern purpose-built home benefits from a concierge service, residents' gym, gated private parking (including bicycle storage), and a well-maintained communal environment.

The property boasts:

## Key Features

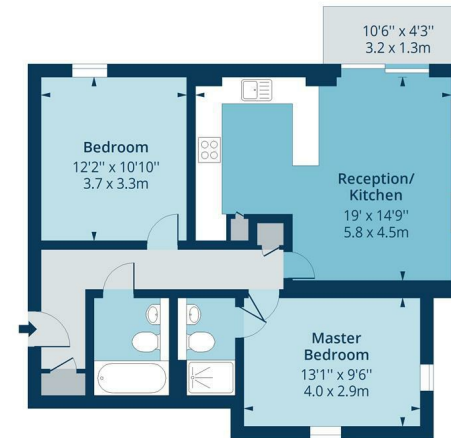
<b>Tenure</b>	Leasehold
<b>Lease Expires</b>	to be confirmed
<b>Ground Rent</b>	to be confirmed
<b>Service Charge</b>	to be confirmed
<b>Local Authority</b>	Haringey
<b>Council Tax</b>	D



## Floorplan

### North Point, N8

Approx. Gross Internal Area 731 Sq Ft - 67.91 Sq M



### Ground Floor

Floor Area 731 Sq Ft - 67.91 Sq M



Measured according to RICS IPMS2. Floor plan is for illustrative purposes only and is not to scale. Every attempt has been made to ensure the accuracy of the floor plan shown, however all measurements, fixtures, fittings and data shown are an approximate interpretation for illustrative purposes only. 1 sq m = 10.76 sq feet.

lpaplus.com

## EPC

Energy Efficiency Rating		Current	Potential
Very energy efficient - lower running costs			
(92 plus) <b>A</b>			
(81-91) <b>B</b>			
(69-80) <b>C</b>			
(55-68) <b>D</b>		65	74
(39-54) <b>E</b>			
(21-38) <b>F</b>			
(1-20) <b>G</b>			
Not energy efficient - higher running costs			
<b>England &amp; Wales</b>	EU Directive 2002/91/EC		

The Energy Performance Certificate (EPC) shows a property's energy efficiency and carbon emissions impact on a scale from 'A' to 'G', where 'A' is most efficient and 'G' least efficient. Better efficiency means lower energy costs. The EPC shows both the properties' current efficiency rating and its potential rating if all possible improvements were made.